



805houses@gmail.com

www.VenturaPropertyMgmt.com

805 390-0526

***In this issue:***

- *Back To School Road Safety*
- *Ventura County Events*
- *Welcome to Ventura Management*
- *Happy Labor Day*
- *September Quote*

***Ventura County Events***

***Home Remodeling Trade Fair***

*Sept. 10th & 11th  
10am to 6pm*

*Main St. Ventura  
between Chestnut and Fir*

***Field To Fork Food, Wine & Brew Festival***

*Sept. 11th 1pm - 5pm  
Ventura County Credit*

*Union Grounds  
Ventura*

***5th Annual Oxnard Jazz Festival***

*Sept. 9th - 11th  
11am to 7pm*

*Oxnard Beach Park*

***Barn Dance and Dinner***

*Sept. 17th 5pm to 9:30  
Strathearn Historical Park  
Simi Valley*

**Back To School Road Safety**

As school doors open, traffic gets a little heavier on our streets. School buses are picking up their passengers, kids on bikes are hurrying to get to school before the bell rings, and harried parents are trying to drop their kids off before work. It's especially important for drivers to slow down and pay attention, especially before and after school. To help with the transition and share the roads safely, here are a few safety tips to remember.



**If You're Dropping Off**

Schools often have very specific drop-off procedures for the school year. Make sure you know them for the safety of all kids. The following apply to all school zones:

- Don't double park; it blocks visibility for other children and vehicles
- Don't load or unload children across the street from the school
- Carpool to reduce the number of vehicles at the school

**Sharing the Road with Young Pedestrians**

According to research by the National Safety Council, most of the children who lose their lives in bus-related incidents are 4 to 7 years old, and they're walking. They are hit by the bus, or by a motorist illegally passing a stopped bus. A few precautions go a long way toward keeping children safe:

- Don't block the crosswalk when stopped at a red light or waiting to make a turn, forcing pedestrians to go around you; this could put them in the path of moving traffic.
- In a school zone when flashers are blinking, stop and yield to pedestrians crossing the crosswalk or intersection.
- Always stop for a school patrol officer or crossing guard holding up a stop sign.
- Take extra care to look out for children in school zones, near playgrounds and parks, and in all residential areas.
- Never pass a vehicle stopped for pedestrians. Always use extreme caution to avoid striking pedestrians wherever they may be, no matter who has the right of way.

## Welcome to Ventura Management

David & Marjorie Thomas  
Mike & Tiffany Gibson  
Faith Larson  
Ami Aaniz



### Sept. 5th Celebrate our nation's workers! Happy Labor Day!

- *Need to buy or sell your home? Ask how we can save you thousands!*
- *Know someone who needs help with property management. We can help!*

*Chris Marsh has been in the real estate business and serving the Ventura County area for over 25 years. He is well versed in all types of real estate matters*



**Chris Marsh**  
805 630-4925



Like us on Facebook

### Back To School Road Safety (Cont.)

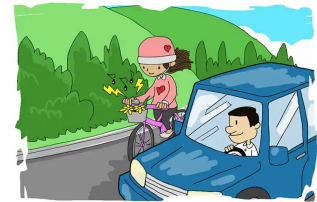
#### Sharing the Road with School Buses

If you're driving behind a bus, allow a greater following distance than if you were driving behind a car. It will give you more time to stop once the yellow lights start flashing. It is illegal in all 50 states to pass a school bus that is stopped to load or unload children.

- Never pass a bus from behind – or from either direction if you're on an undivided road – if it is stopped to load or unload children
- If the yellow or red lights are flashing and the stop arm is extended, traffic must stop
- The area 10 feet around a school bus is the most dangerous for children; stop far enough back to allow them space to safely enter and exit the bus
- Be alert; children often are unpredictable, and they tend to ignore hazards and take risks.

#### Sharing the Road with Bicyclists

On most roads, bicyclists have the same rights and responsibilities as vehicles, but bikes can be hard to see. Children riding bikes create special problems for drivers because usually they are not able to properly determine traffic conditions. The most common cause of collision is a driver turning left in front of a bicyclist.



- When passing a bicyclist, proceed in the same direction slowly, and leave 3 feet between your car and the cyclist
- When turning left and a bicyclist is approaching in the opposite direction, wait for the rider to pass
- If you're turning right and a bicyclist is approaching from behind on the right, let the rider go through the intersection first, and always use your turn signals
- Watch for bike riders turning in front of you without looking or signaling.
- Watch for bikes coming from driveways or behind parked cars
- Check side mirrors before opening your door.

By exercising a little extra care and caution, drivers and pedestrians can co-exist safely.

### September Quote:

*Remember that sometimes not getting what you want is a wonderful stroke of luck.*

*.... Dalai Lama*

Member of the National Association of Residential Property Managers

